

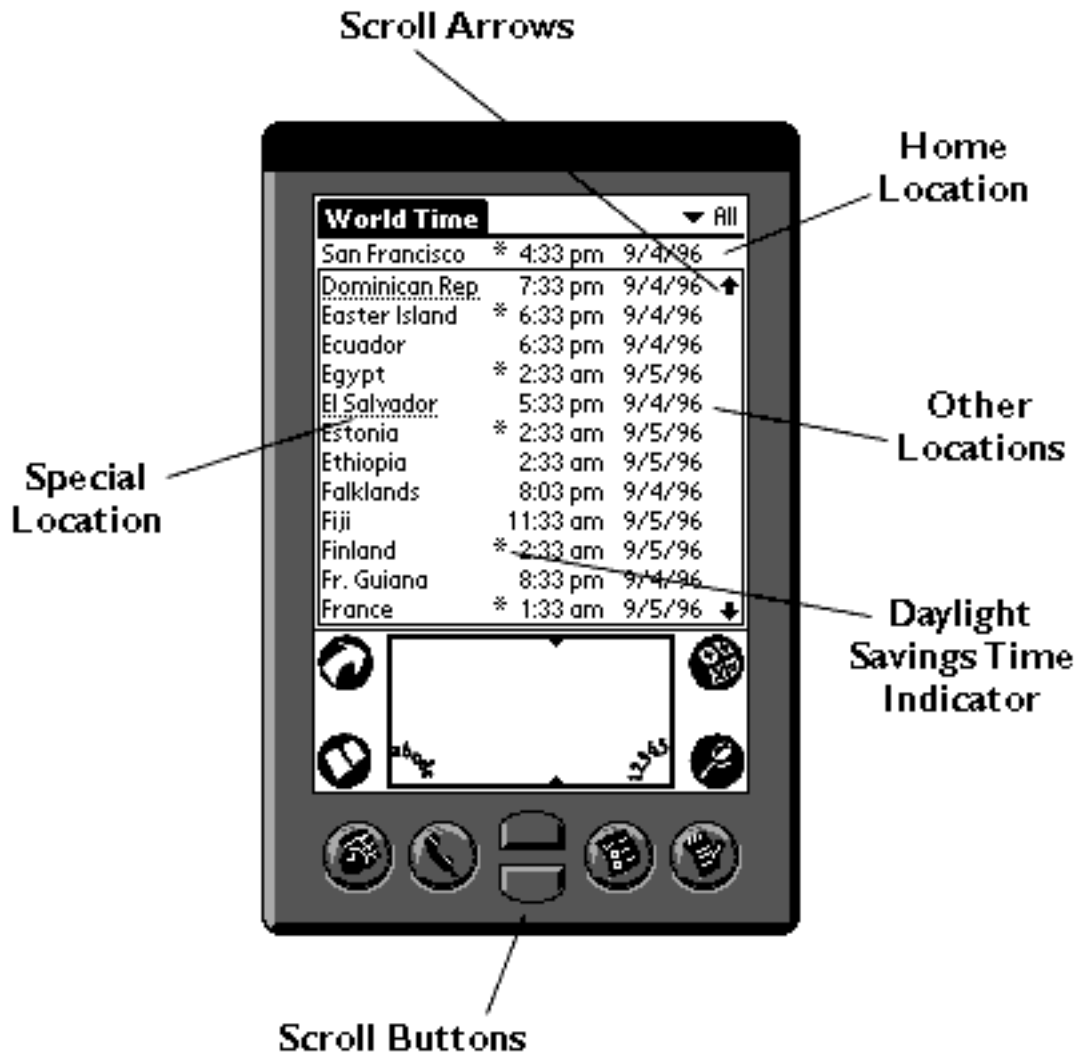
World Time 1.3

Copyright © 1996 by Creative Digital Inc. All rights reserved.

293 Corbett Avenue, San Francisco, CA 94114
415.621.4252, 415.621.4922 (fax)
wtime@cdpubs.com, <http://www.cdpubs.com>

An Overview of World Time

World Time is a Palm Pilot application that calculates the current the date and time of various locations around the world. It includes about 250 sites –countries, time zones, and cities – and calculates the date and time for each of them relative to a home location. You view these locations in an alphabetically-arranged scrolling list that shows the name and current time and date for each location:

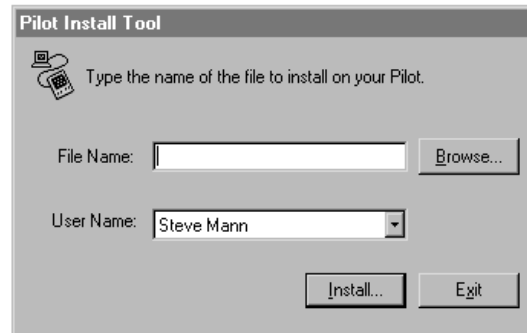


In addition, an asterisk appears to the left of any location that is currently operating under daylight savings time rules.

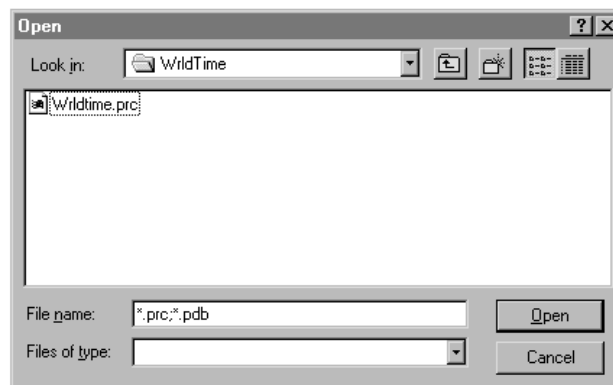
Installing World Time

Before installing World Time, make sure you have no previous version of the program, including a demo version, on your Pilot. If you do, delete it using the Memory application.

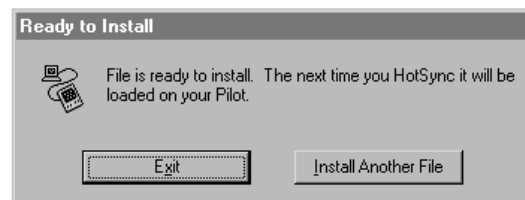
To install World Time, start the Pilot Install Tool INSTAPP.EXE, which can be found in the \PILOT folder on your Windows system. When you start INSTAPP, The following window appears:



Click on the Browse button to locate the WRLDTIME.PRC file either on the floppy disk you received from us, or from some other location where you placed the file after receiving it from us electronically. Once you locate it, select WRLDTIME.PRC and click on the Open button:



The first window should reappear. Click on the Install button. The following dialog appears:



Click the Exit button. Finally, whenever you're ready, hit the HotSync button on your Pilot. Your Pilot Hot Syncs with the Pilot Desktop and installs World Time as part of the Hot Sync process.

Using World Time

To use World Time, you first select a home location by tapping on a name in the scrolling list and choosing the Set Home Location command from the World Time Options menu:



(You activate the Options menu by tapping on the MENU icon at the lower left-hand corner of the Pilot Graffiti entry pad.) The home location appears at the top of the World Time locations list and stays there until you select another home location.

Once you select a home location, the program sets and displays the date and time of all the other locations relative to that primary location. For instance, if your Pilot's current time is set to 3:42 pm, and you set your home location to San Francisco, World Time assumes that San Francisco's time is 3:42 pm. The time for a location like New York, which is three hours ahead of San Francisco, is then displayed as 6:42 pm. When the Pilot clock changes to 3:43, all the World Time locations are updated to reflect the new time.

World Time factors in daylight savings time, although with a simplification – it assumes that daylight savings time runs from April 1 through September 30 in the northern hemisphere, and October 1 through March 31 in the southern hemisphere. Each country (and time zone within each country) often has its own specific dates for daylight savings time that are close to, but not exactly the same as those World Time uses. Any location that is currently operating under daylight savings time is marked with an asterisk to the left of their current date and time.

The information that World Time displays is formatted according to the preferences that you previously selected for date and time formats using the Prefs application. If you change any of your preferences while using World Time, it redisplayes the information according to your new settings. The same is true if you change the date or time.

Quick Navigation Shortcuts

There are three types of shortcuts for navigating through World Time's location list.

If you enter a series of alphabetic strokes (up to five) using the Graffiti keypad, the program scrolls to the location starting with that series of letters. When you enter the first letter, World Time starts a timer of approximately two seconds. If you enter a second letter before the two seconds pass, World Time assumes that you want to match the second letter against the second character of a location's name. It does the same with the third, fourth, and fifth letters if entered before subsequent two-second intervals pass. If you wait more than two seconds, World Time starts the lookup by letter all over again.

You can also scroll through the locations list using the scroll arrows on the locations lists. These buttons move the list forward or backward a complete page of locations each time you tap them.

The third method is to use the scroll buttons located in the center of the bottom of the Pilot. They also move the list forward or backward a complete page of locations each time you tap them.

Special Places

You can define a set of preferred locations with World Time. This is for viewing a subset of the complete World Time data, for those of you that regularly check a group of locations.

To create a Special Place, tap on a location and choose the Mark Special Place command on the menu. World Time underlines the location's name.

World Time			▼ All
San Francisco	* 6:48 pm	9/4/96	
Afghanistan	6:18 am	9/5/96	
Alaska	* 5:48 pm	9/4/96	
Albania	* 3:48 am	9/5/96	
Aleutian Isles	* 4:48 pm	9/4/96	
Algeria	2:48 am	9/5/96	
Anchorage	* 5:48 pm	9/4/96	
Angola	2:48 am	9/5/96	
Argentina	10:48 pm	9/4/96	
Arizona	6:48 pm	9/4/96	
Armenia	* 5:48 am	9/5/96	
Athens	* 4:48 am	9/5/96	
Atlanta	* 9:48 pm	9/4/96	↓

To remove an item from the Special Places list, tap the location and choose the Unmark Special Place on the menu. The name's underlining disappears.

To view just the Special Places, select Special from the pop-up choices list on the upper right-hand side of the screen:

World Time		All
San Francisco	* 4:48 pm	Special
Houston	* 6:33 pm	9/4/96 ↑
Hungary	* 1:33 am	9/5/96
Iceland	11:33 pm	9/4/96
India	5:03 am	9/5/96
Indiana, East	6:33 pm	9/4/96
Indonesia, C	7:33 am	9/5/96
Indonesia, E	8:33 am	9/5/96
Indonesia, W	6:33 am	9/5/96
Iran	* 4:03 am	9/5/96
Iraq	* 3:33 am	9/5/96
Ireland	11:33 pm	9/4/96
Israel	* 2:33 am	9/5/96 ↓

Only the Special Places appear in the scrolling list, without their underlines. The pop-up changes to Special to indicate that you are viewing the Special Places:

World Time		▼ Special
San Francisco	* 4:33 pm	9/4/96
Dominican Rep	7:33 pm	9/4/96
El Salvador	5:33 pm	9/4/96
Gibraltar	* 1:33 am	9/5/96
Hong Kong	7:33 am	9/5/96
Ireland	11:33 pm	9/4/96

While viewing the Special Places, just as when you are viewing the complete locations list, you can remove a location from the Special Places list using the Unmark Special Place command. It disappears from the Special Places list, but reappears when you go back to view all locations.

It Saves Your Settings

In between World Time sessions, the program remembers what you were doing. The home location, special places list, current location in the list of items you are viewing, the current list selection (if there is one), and the Special vs. All view are restored when you restart World Time.

Miscellaneous Commands

World Time has two other menu commands. The first, About World Time, shows basic information about the product – the version number, expiration date, how to get in touch with us, and so on.



The second, helpful Hints, displays a dialog with a scrolling list of abbreviated instructions on how to use the program. You can scroll through them using either the scroll buttons on the Pilot or the scroll arrows on the screen.



Tech Support

This is the first commercial release of World Time. We're very interested in your suggestions about ways we can improve the program to fit your needs. Feel free to write, call, e-mail, or fax comments, suggestions, problems, or comments of any kind. Of course, feel free to contact us for support as well. Thank you for purchasing World Time.

Creative Digital Inc.
293 Corbett Avenue, San Francisco, CA 94114
415.621.4252, 415.621.4922 (fax)
wtime@cdpubs.com, <http://www.cdpubs.com>